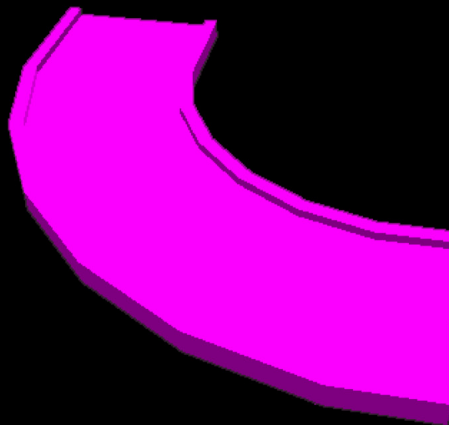
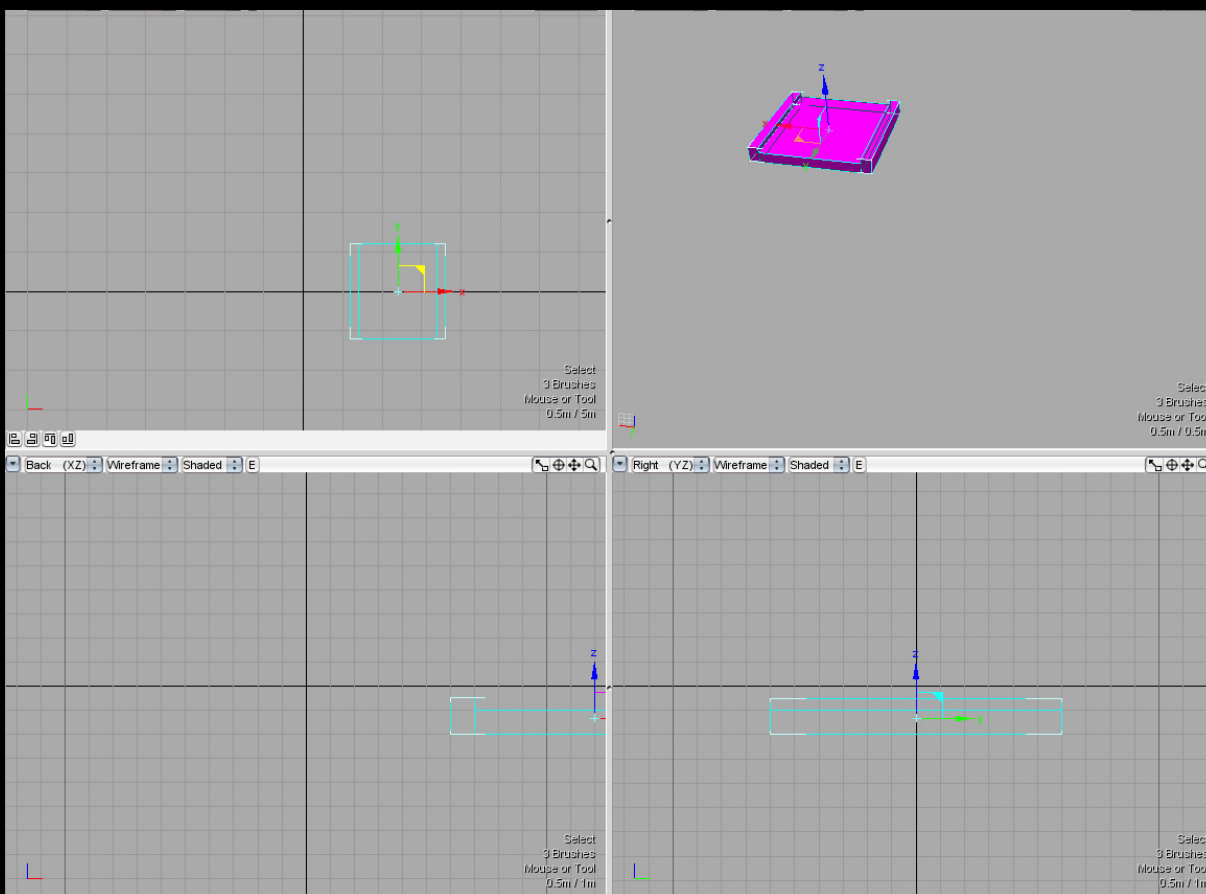


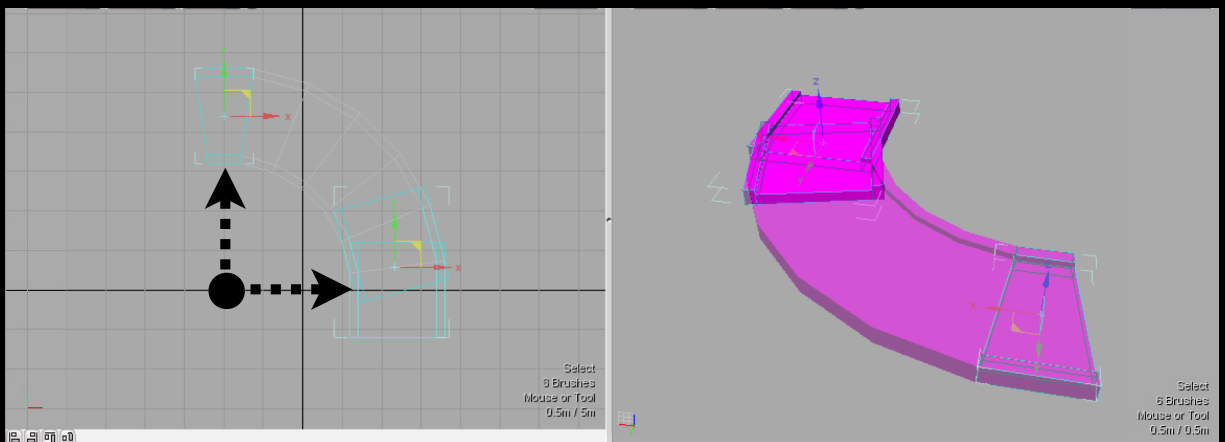
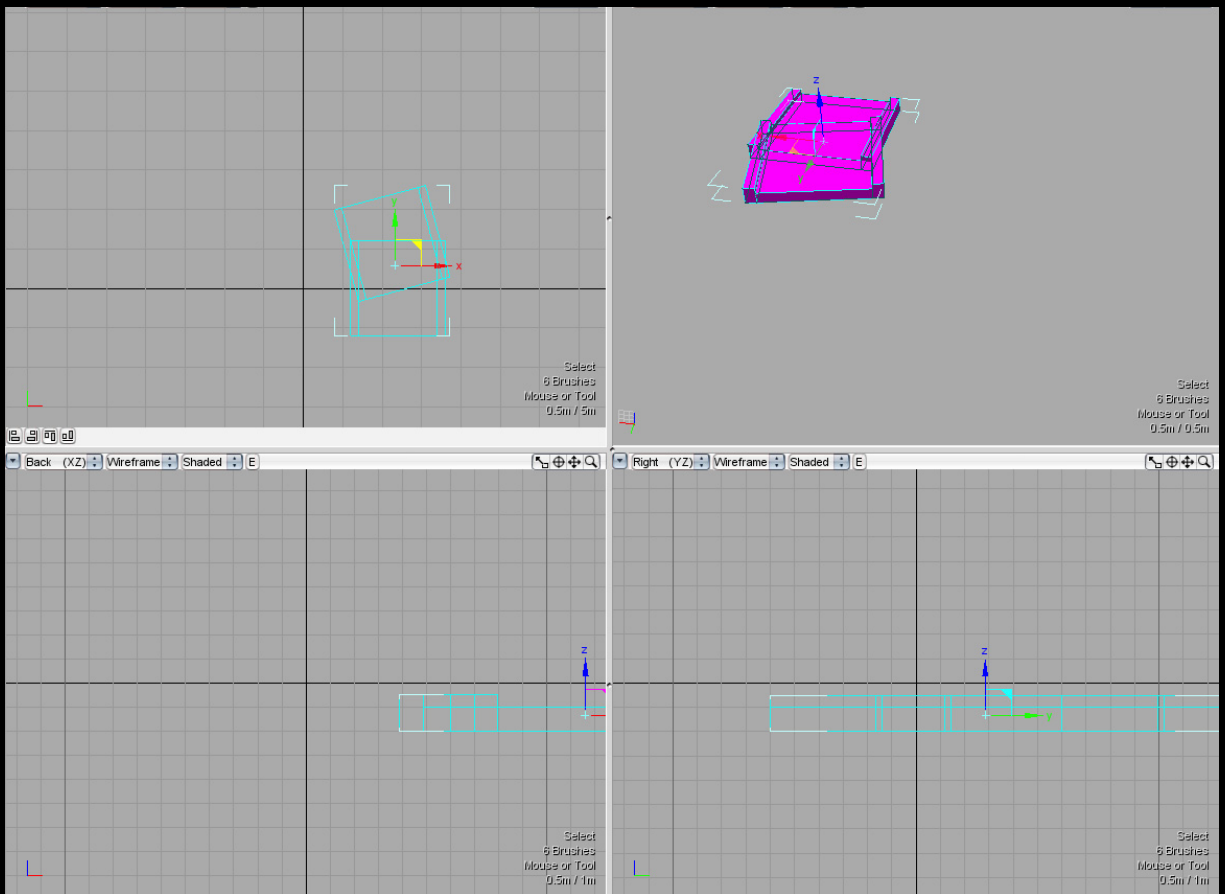
How to make Curved Track



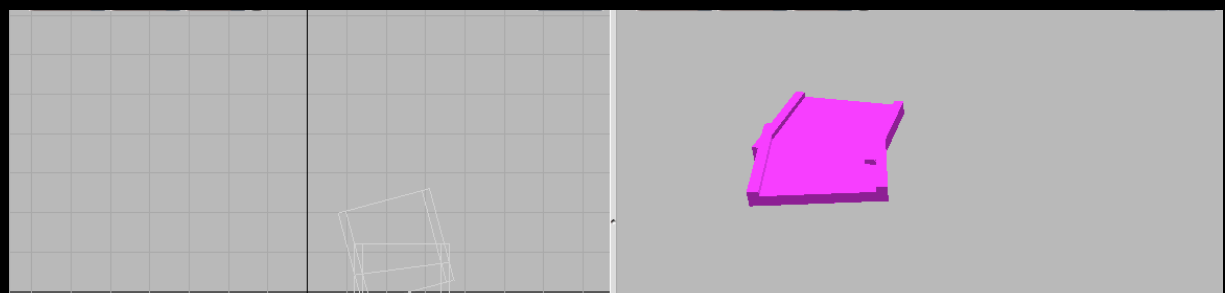
Start of by making a segment of the piece of track you want to use. The larger the curve of the track the longer the piece will need to be.

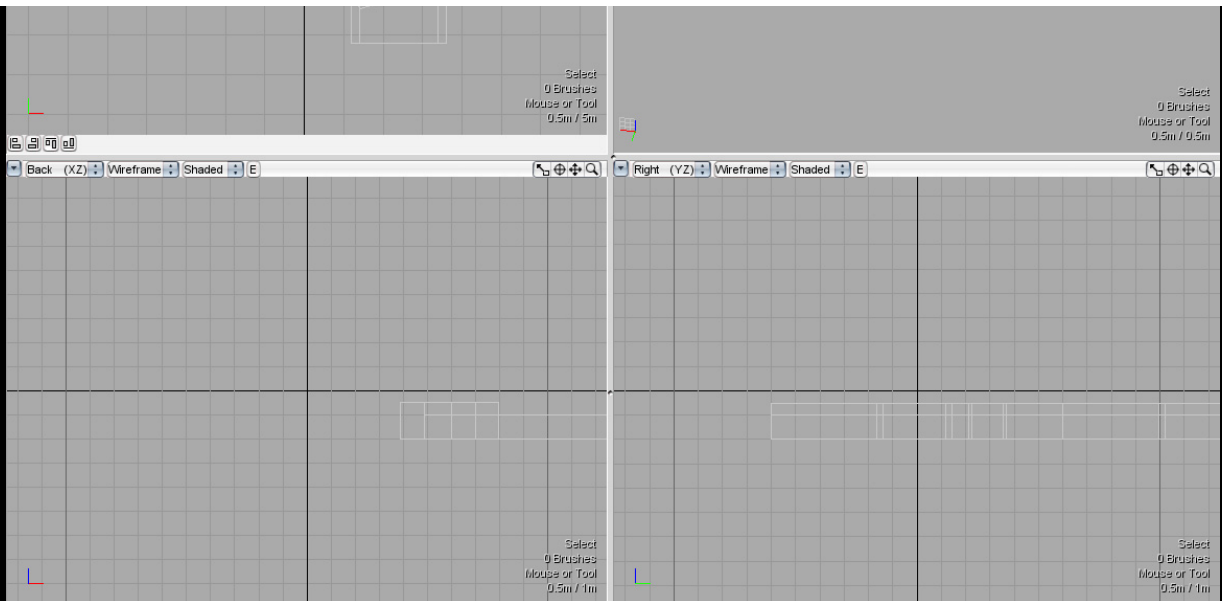


Now create a duplicate using the radial clone. The position of the clone needs to be in the center of the track peice being cloned and at the same time in the center of the wanted ending track. Just make one duplicate. I used an angle of 15 degrees.

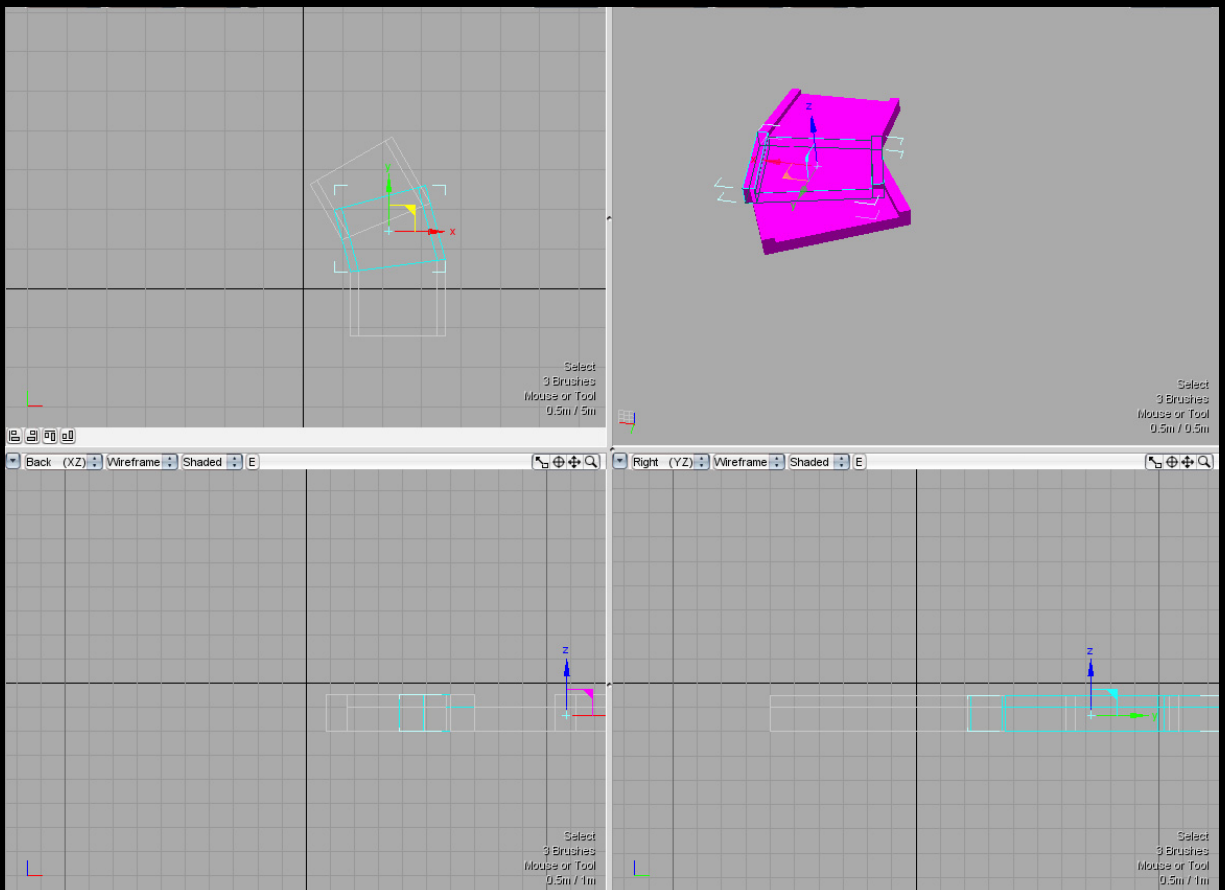


Using the knife tool cut across the place where the two pieces intersect. If you need to change the grid spacing (you probably will).



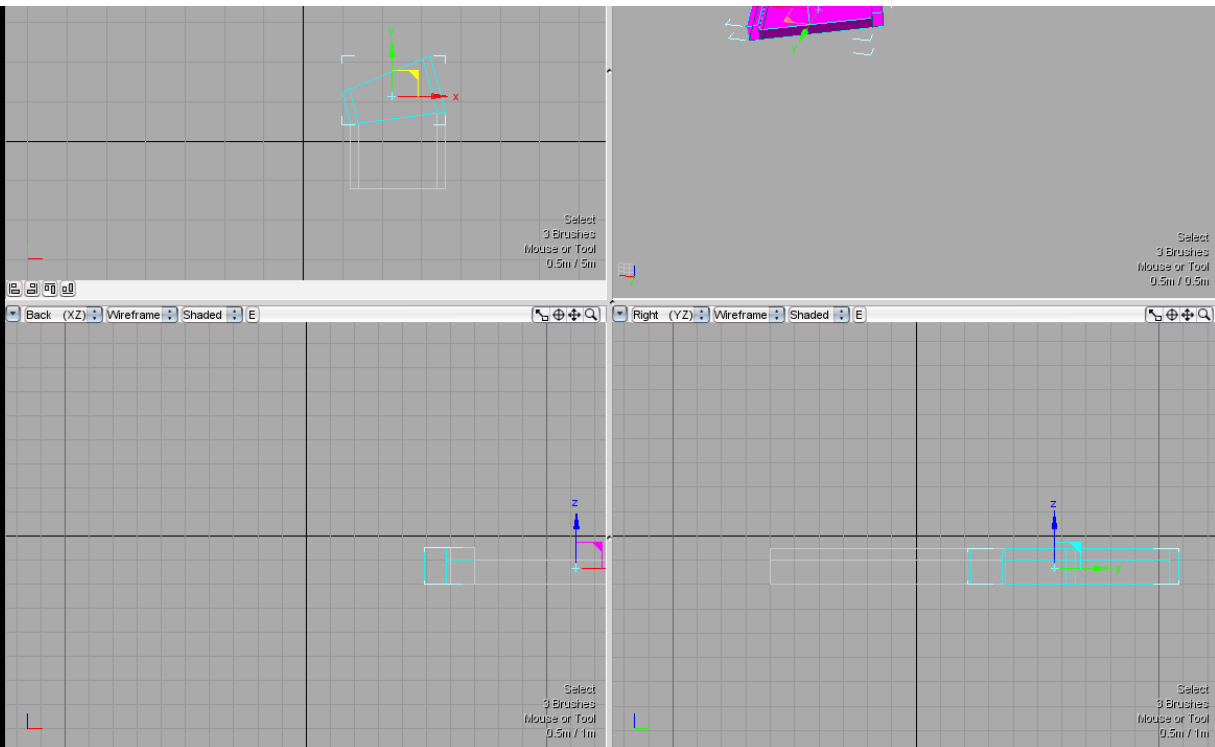


Next delete the extra pieces and then make a duplicate of this new piece using the radial clone with the same position as you first used.

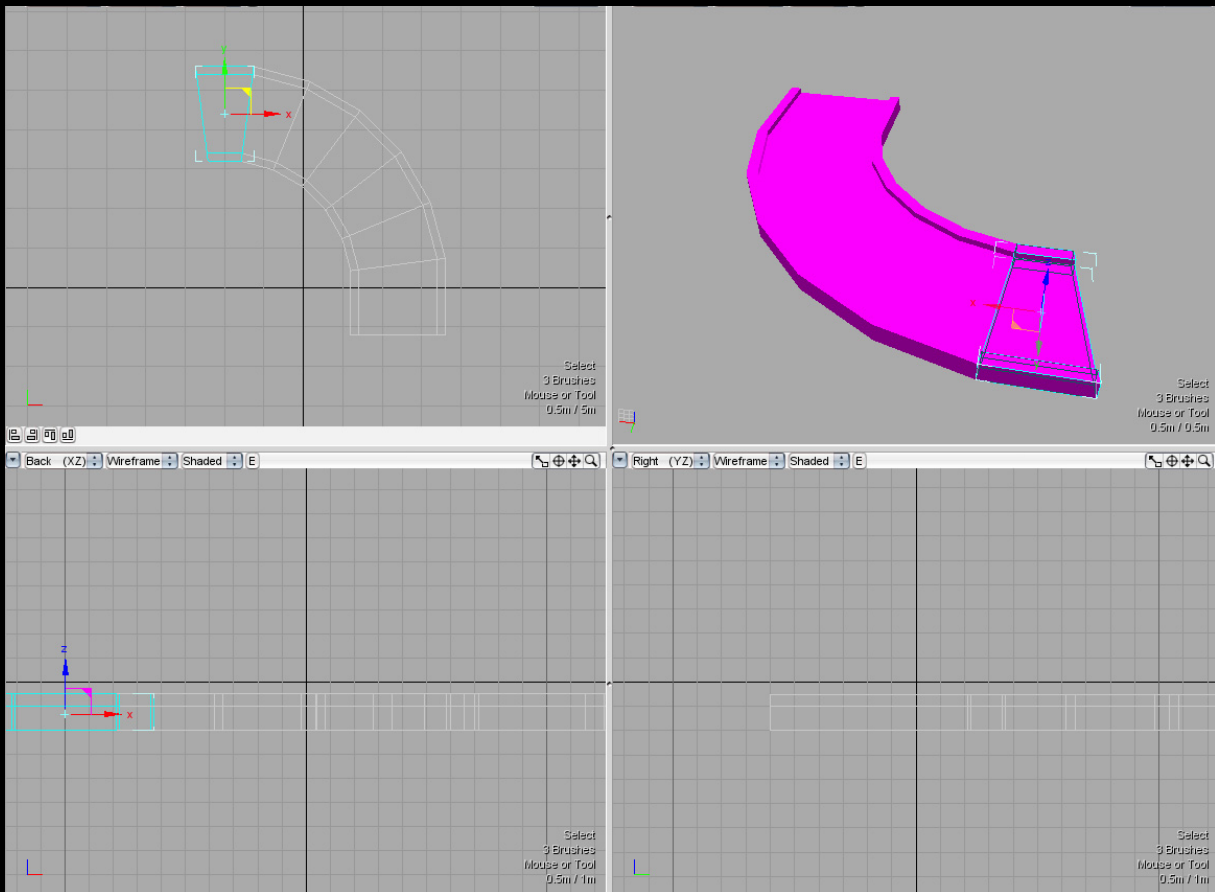


Use the knife to cut across this intersection and delete the extra pieces.





Use the radial clone to create more duplicates of this piece using the same position as the other 2 times. The number you want to make will depend on the angle you're want to make.



Now if your planing on adding a straight piece onto the end use the Knife tool to cut the end so it is at the correct angle.

